



INTENSIFY
Professional Services

Our Capabilities

Experience and industry knowledge to ensure your objectives are met.

1

Business Improvement

2

Project Engineering

3

Asset Management

4

HSEC

Overview

Professional Services

Based in Perth, Western Australia, Intensify formed in 2024 to provide specialist services to mining, railway and heavy industry.

Leveraging decades of experience and connections to a network of industry experts, Intensify customise services based on individual scopes of work.

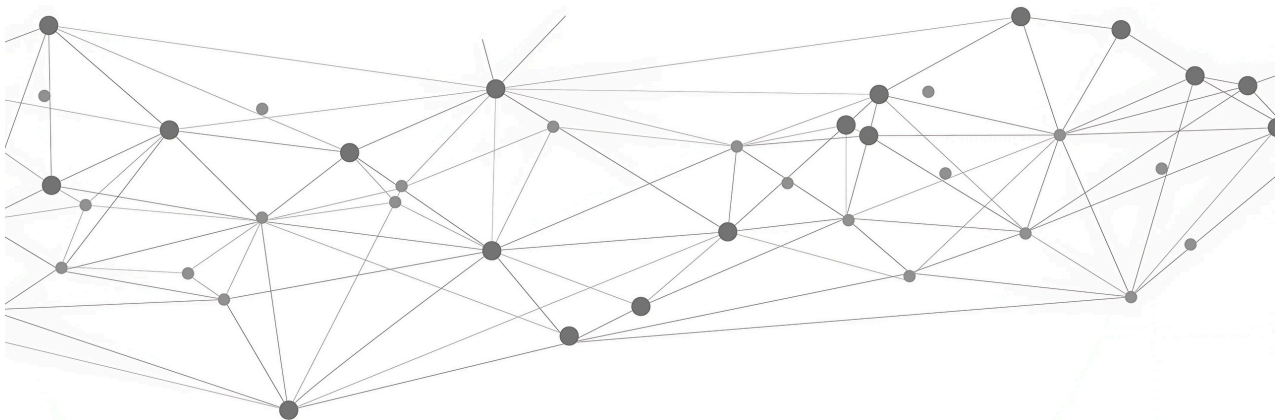
This model enables access to a broad range of expertise while at the same time remaining nimble and cost competitive.



Business Improvement

Six sigma based process improvement, scalable to suit the organisation

- Improve processes, connect to stakeholders and enable sustainable growth
- Leadership training to develop technical personnel into effective supervisors and managers
- Establish high performing teams, create a culture of respect and inclusiveness, manage stress and build resilience.
- Tender support
- Integrate innovation and technology
- Manage change more effectively



Project Engineering

Capital program advisory and execution services

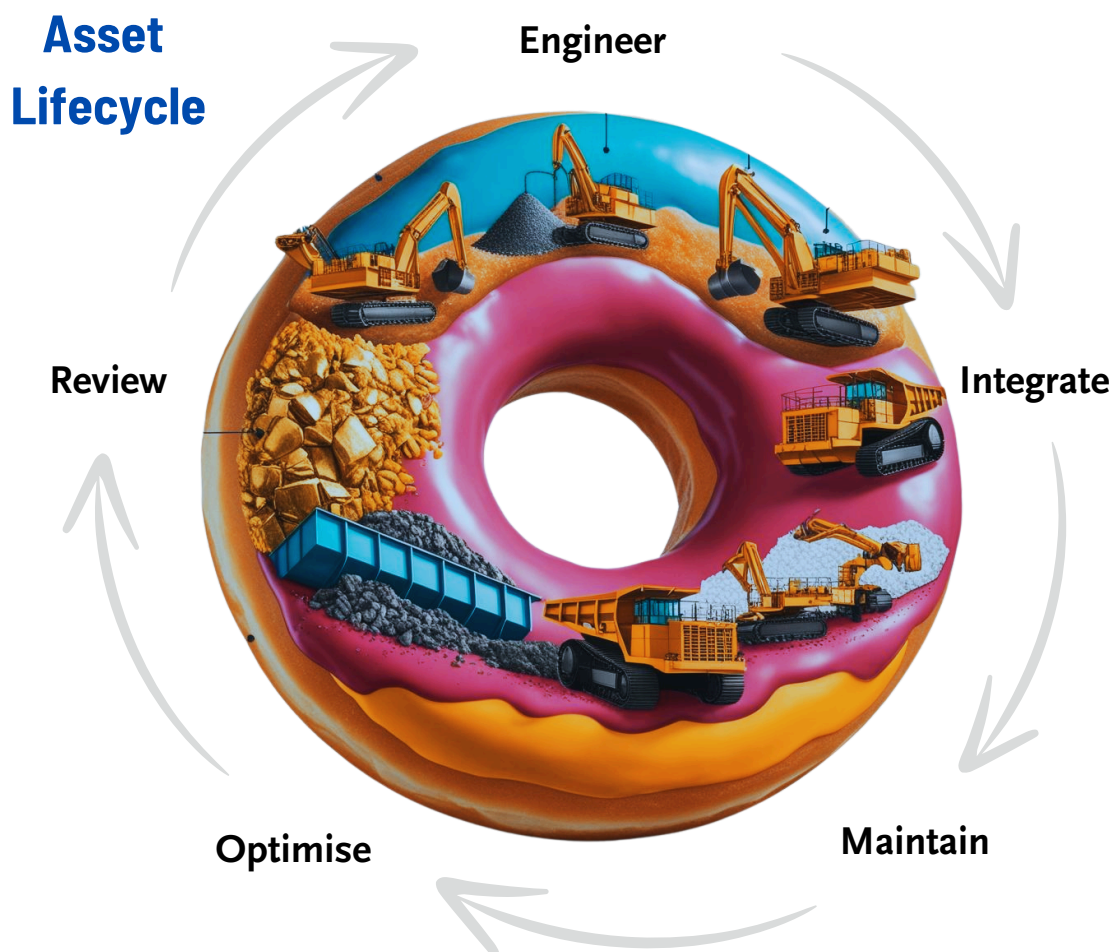
- Hands on project management for any phase of the project, including studies, engineering and construction
- Offshore engineering drafting services
- Risk analysis (FMEA, HAZOP etc)
- Quality assurance and quality control (QA/QC) services.
- Portfolio prioritisation, resource smoothing, business case analysis and KPI development
- Mobility solutions
- Communications services
- Project health analysis and lessons learnt sessions
- Training of personnel to improve project delivery performance



Asset Management

Effectively manage assets across the lifecycle

- Maintenance effectiveness reviews
- Reliability improvement solutions
- Asset health technology selection and integration
- Asset inspections, risk rating and criticality assessments
- Defect repair scoping with early contractor involvement (ECI)
- Equipment failure investigation and root cause analysis
- Work management and shutdown analysis and training
- Supply chain performance analysis



Improve safety culture, the sustainability of your operation and your engagement with broader communities

- Varying levels of incident investigation depending on severity (Eg TapRoot, Essential Factors, 5 Whys)
- Safety coaching for leaders and team members
- Facilitate safety pauses and develop improvement plans
- Safety audits and reviews
- Risk Assessment facilitation
- Tender support
- Psychosocial risk management
- Indigenous engagement strategies



Meet Our Director

Michael Courtney



With 25 years of experience in the Australian mining, railway and engineering sectors, including more than 15 years on the client side at Rio Tinto, Michael is committed to assisting companies to achieve their objectives.

He holds a Bachelor of Engineering with Honours and a Bachelor of Science from UWA, along with a Diploma in Business, a Six Sigma Blackbelt and various leadership and safety certifications.

Key Skills

- Scoping and implementing services to assist businesses to full fill needs
- Developing strong relationships with key stakeholders
- Analysing return on investment
- Risk analysis, safety analysis and leadership
- Joining together project engineering principles and techniques with sustainable asset management
- Technology and innovation integration
- Team building, organisational development and leadership coaching



INTENSIFY

Professional Services

office@intensifypro.com | www.intensifypro.com

The information provided in this brochure has been provided as general advice only.

The services listed are indicative and generation of a scope of services is required prior to entering into a commercial arrangement. No warranty is given in respect of the information provided and accordingly neither Intensify Professional Services nor its related entities, employees or agents shall be liable on any ground whatsoever with respect to decisions or actions taken as a result of you acting upon such information.

© Copyright 2024 Intensify Professional Services All rights reserved Commercial in Confidence